

MONTHLY MEMBERSHIP PROGRESS REPORT

LOCATION NEWFOUNDLAND-LABRADOR

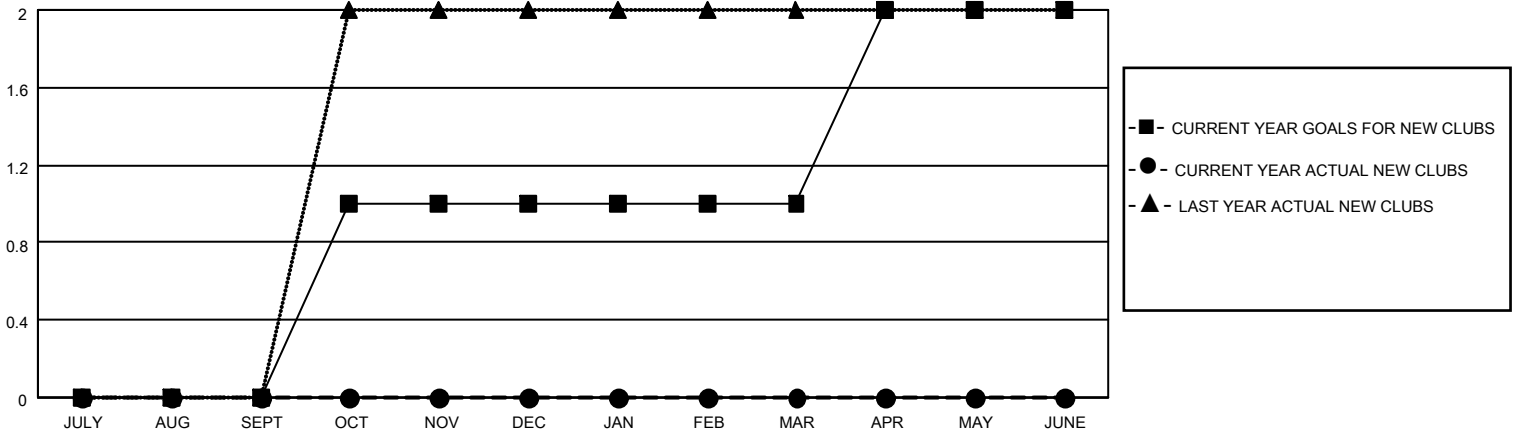
District N 3

Results as of: 6/30/2023

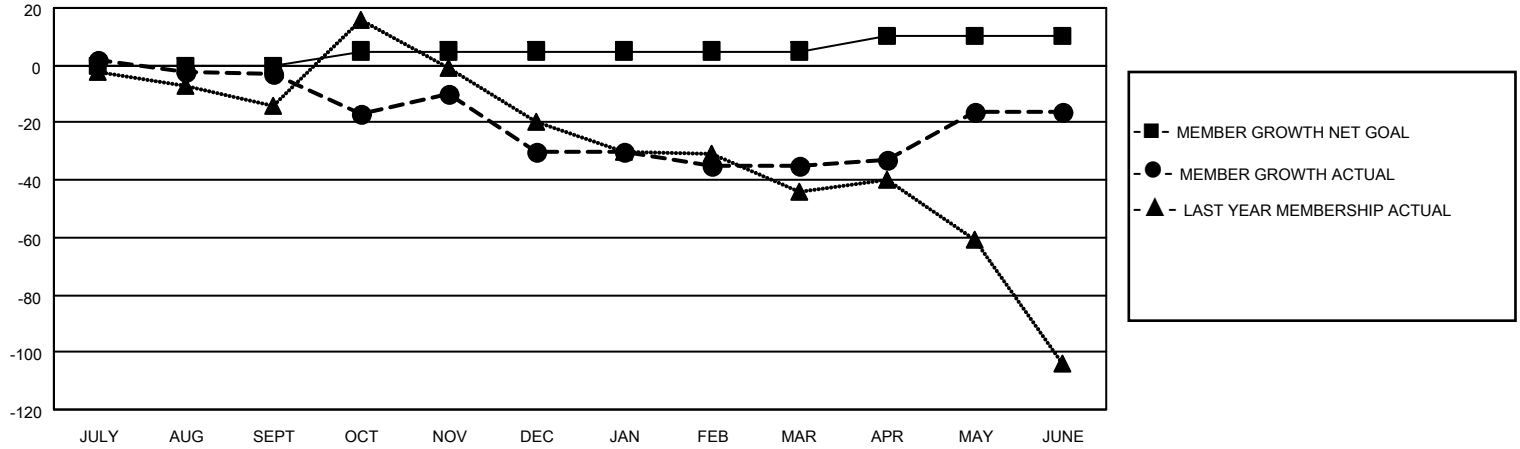
Clubs			
RESULTS FOR 2022-2023			
QUARTER	NEW CLUB GOAL	NEW CLUBS	DROPPED CLUBS
JULY/AUG/SEPT	0	0	1
OCT/NOV/DEC	1	0	0
JAN/FEB/MAR	0	0	0
APR/MAY/JUNE	1	0	0

Members			
RESULTS FOR 2022-2023			
QUARTER	MEMBER GROWTH NET GOAL	MEMBER GROWTH ACTUAL	DROPPED MEMBERS ACTUAL (including transfers)
JULY/AUG/SEPT	0	14	15
OCT/NOV/DEC	5	29	52
JAN/FEB/MAR	0	44	44
APR/MAY/JUNE	5	40	20

GOALS AND ACTUAL NEW CLUBS CUMULATIVE



GOALS AND ACTUAL MEMBERS CUMULATIVE



DROPPED CLUBS: 1

30 CLUBS OF 45 ADDED 1 OR MORE NEW MEMBERS

GENDER DISTRIBUTION

MALE	553 (56.66%)
FEMALE	423 (43.34%)
NON BINARY	0 (0.00%)
PREFER NOT TO ANSWER	0 (0.00%)

DROPPED MEMBERS

[CLICK HERE FOR CUMULATIVE MEMBERSHIP DATA](#)

DECEASED	13
CLUB CANCELLED	0
OTHER	118
TOTAL	131

TOTAL FAMILY UNIT MEMBERS 206

FAMILY MEMBERS PAYING HALF DUES 104